

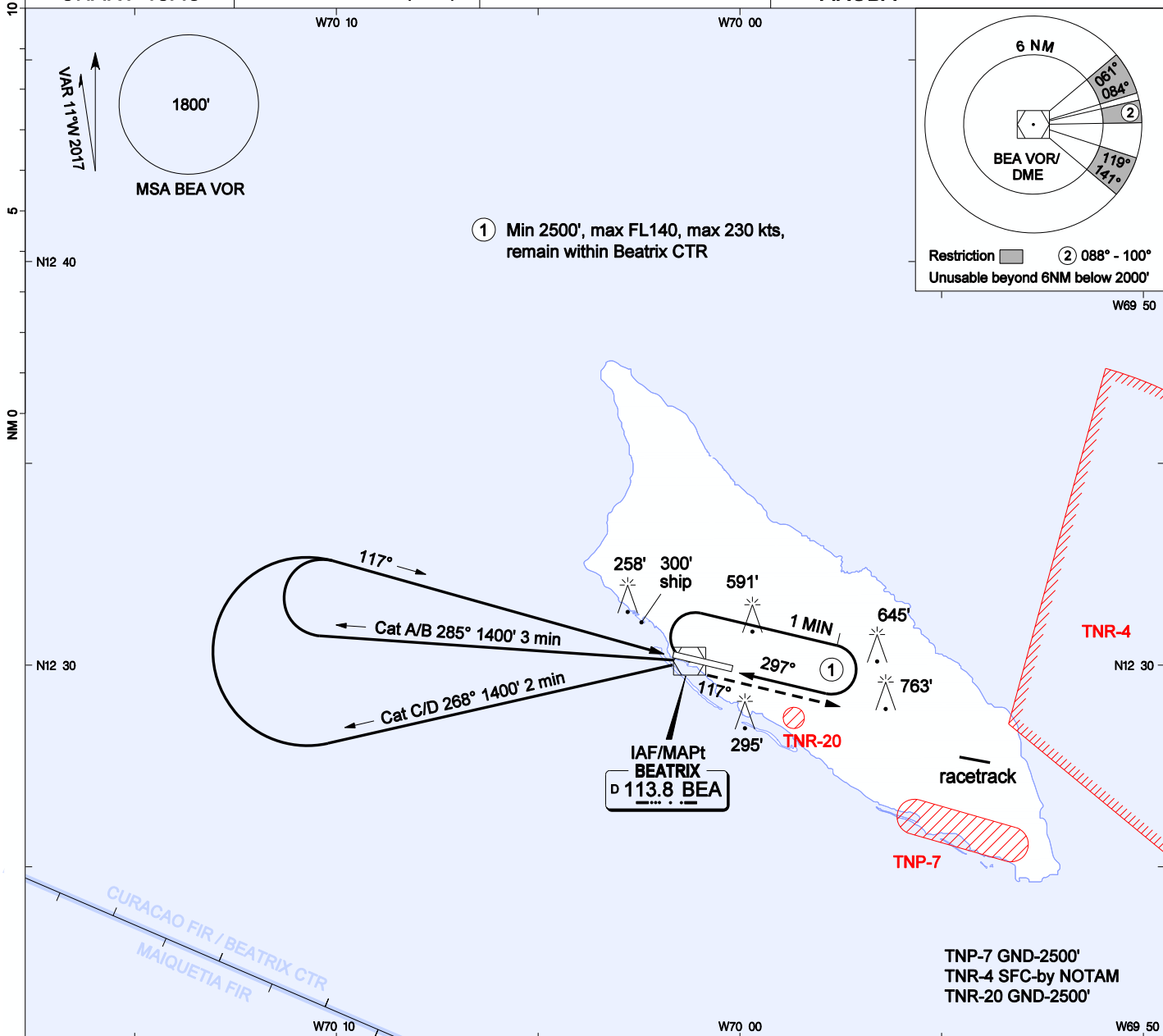
AIP DUTCH CARIBBEAN

**INSTRUMENT  
APPROACH  
CHART- ICAO**

AD ELEVATION: 62'  
TRANS LEVEL: FL 40  
TRANS ALT: 2500' (2438')

APPR/TWR 120.90 GND 118.0  
APRON 121.6 ATIS 132.1

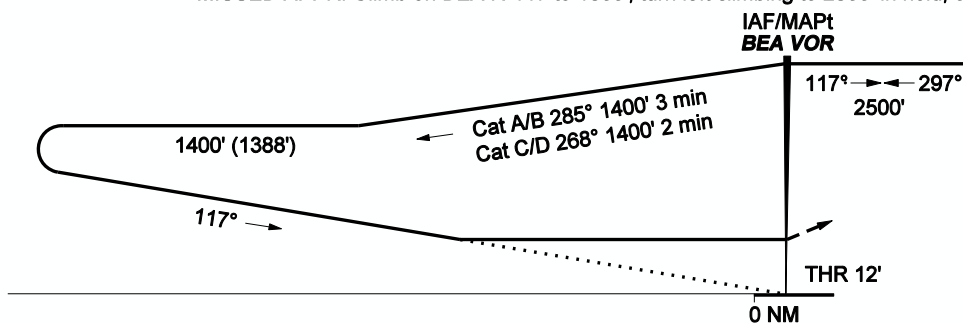
**VOR X RWY 11  
REINA BEATRIX INT'L (TNCA)  
ARUBA**



① Min 2500', max FL140, max 230 kts, remain within Beatrix CTR

Restriction ② 088° - 100°  
Unusable beyond 6NM below 2000'

MISSED APPR: Climb on BEA R-117 to 1800', turn left climbing to 2500' in hold, or as directed by ATC.



OCA(H)	A	B	C	D	GROUNDSPEED - DESCENT RATE						
					KNOTS	70	90	100	120	140	160
STRAIGHT-IN	600' (588')	600' (588')	600' (588')	600' (588')	FT/MIN	372	478	531	637	743	849
CIRCLING	890' (828')	890' (828')	1160' (1098')	1160' (1098')							

CHANGES: Mag var date.

1. Procedure not available when TNR-4 is active.
2. Bearings are magnetic, altitudes, elevations and heights in feet and distance in NM. Straight-in heights are relative to THR elevation, other heights are relative to AD elevation.